





## This isn't your ordinary workbench.

Count on Miller to create a workbench that makes welding faster and easier. ArcStation™ is the first-ever workbench designed for welding and metalworking. Miller ArcStation offers:

- **Durability** — All-steel construction and thoughtful performance features make our ArcStations built to last.
- **Versatility** — ArcStation is available with a variety of accessories that you can mix and match to suit your individual needs.
- **Affordability** — With numerous sizes, styles, and configurations to choose from, you can find an ArcStation that fits your projects and budget.



### Built for the way you work.

Forget about welding on the floor or makeshift benches. Engineered specifically for the welding process, ArcStation is just the right height for you to work comfortably, safely, and quickly. You can customize your workbench with a wide range of handy accessories, and organize everything you need in one convenient workbench.

## Product comparison at a glance

	S-Series	F-Series
<b>Applications</b>	Heavy-duty, sturdy workbench designed to remain set up in a shop or garage	Portable folding workbench ideal for bringing to the job site and saving space
<b>Sizes</b>	30 x 30 in or 30 x 60 in	30 x 30 in
<b>Tabletop styles</b>	3/16-in solid or 3/8-in X-pattern	3/16-in X-pattern
<b>Accessories</b>	Tool chest, vise kit, vise mount, 5-in X-clamp, 6-in X-clamp, convenience kit, interior shelf, weld curtain, casters	5-in X-clamp
<b>Portability</b>	No	Yes — 74 lb, wheels standard
<b>Load capacity</b>	1000 lb (454 kg)	500 lb (227 kg)



60SX with optional accessories

# S-Series ArcStation™

## For the welder who's tough on equipment

The S-Series ArcStation is perfect for the fab shop or home garage. Its durable frame and heavy-duty tabletop provides a sturdy foundation for welding or metalworking.

### Models available:

- 30S (30 x 30 in S-Series with 3/16-in solid tabletop)
- 30SX (30 x 30 in S-Series with 3/8-in X-pattern tabletop)
- 60S (30 x 60 in S-Series with 3/16-in solid tabletop)
- 60SX (30 x 60 in S-Series with 3/8-in X-pattern and solid tabletop combo)

### Standard features:

- X-pattern tabletop on SX models makes clamping trouble-free.
- Frame construction consists of 1 1/2-in square tubing.
- Sturdy 1/8-in-thick steel frame with crossbar adds stability.
- Lower shelf provides storage for equipment, tools, and raw materials.
- Adjustable leveling feet keep the bench rock steady.
- Weight capacity is 1000 lb (454 kg).

## Make it the perfect workbench for you by including some handy accessories

- 1 Tool chest
- 2 Vise kit (includes vise, vise mount and all mounting hardware)
- 3 Vise mount (only)
- 4 5-in X-clamp
- 5 6-in X-clamp
- 6 Interior shelf
- 7 Weld curtain
- 8 Casters
- 9 Outer shelf

Convenience Kit includes the following:

- 10 Tool holder
- 11 Clamp bar
- 12 Gun holder



30FX with optional 5-inch X-clamps

# F-Series ArcStation™

## For the welder who requires portability and space savings.

The F-Series ArcStation's unique folding design and convenient handle and wheels make it easy to take to the job site or move around the shop or garage. And since it folds down into a compact size, the F-Series is easy to store.

### Model available:

- 30FX (30 x 30 in F-Series with 3/16-in X-pattern tabletop)

### Standard features:

- X-pattern tabletop on FX models makes clamping trouble-free.
- 1 1/2-in diameter steel tube frame offers stability and support.
- Wheels and a handle make the 74-lb bench easy to transport.
- Removable gun holder provides a convenient place to store your welding gun.
- Weight capacity is 500 lb (227 kg).

**Add the optional 5-inch X-clamps for the ultimate portable workbench (as shown above).**



# Build your ArcStation™

## S-Series



**30S** (951 167)

**Tabletop style** 3/16-in solid tabletop  
**Weight** 123 lb (56 kg)  
**Dimensions** 30 x 30 in (35 x 29 x 29 in)



**30SX** (951 168)

**Tabletop style** 3/8-in X-pattern tabletop  
**Weight** 177 lb (80 kg)  
**Dimensions** 30 x 30 in (35 x 29 x 29 in)



**60S** (951 169)

**Tabletop style** 3/16-in solid tabletop  
**Weight** 230 lb (104 kg)  
**Dimensions** 30 x 60 in (35 x 58 x 29 in)



**60SX** (951 170)

**Tabletop style** 3/8-in combo tabletop  
**Weight** 318 lb (144 kg)  
**Dimensions** 30 x 60 in (35 x 58 x 29 in)

### S-SERIES ACCESSORIES:

	Stock #	Description
<input type="checkbox"/>	300 610	Tool chest
<input type="checkbox"/>	300 611	Vise kit
<input type="checkbox"/>	300 612	Vise mount
<input type="checkbox"/>	300 613	6-in X-clamp
<input type="checkbox"/>	300 614	Convenience Kit
<input type="checkbox"/>	300 679	Interior shelf
<input type="checkbox"/>	300 680	Outer shelf
<input type="checkbox"/>	300 685	30-in weld curtain
<input type="checkbox"/>	300 686	60-in weld curtain
<input type="checkbox"/>	300 849	Casters
<input type="checkbox"/>	300 850	5-in X-clamp

## F-Series



**30FX** (300 837)

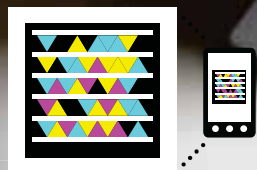
**Tabletop style** 3/16-in X-pattern tabletop  
**Weight** 74 lb (34 kg)  
**Dimensions** 30 x 30 in (35 x 29 x 35 in unfolded, 6 x 29 x 48 in folded)

### F-SERIES ACCESSORY:

	Stock #	Description
<input type="checkbox"/>	300 850	5-in X-clamp

# ArcStation™

The only workbench designed for welders



Scan this tag to see the ArcStation video

[MillerWelds.com/ArcStation](http://MillerWelds.com/ArcStation)

Follow us:   

