

Technical Data

Rating at 60% duty cycle
(10 min. cycle)

- Mixed gas: 150 A
- CO₂: 170 A

Cooling method Gas cooling

Wire diameter 0.6 - 1.0 mm

Gas flow 10 l/min

Technical specification according to IEC 60974-7

Connection Euro-Central connector
Other connectors are available upon request.

Torch rating will be reduced when using pulsed-arc power sources.



Contact tips

	Pos.	Part no.
M6	▶ 10 ECu, M6 x 25	340P__1073*
	CuCrZr, M6x25	340P__3073*
	Alu, ECu, M6x25	341P__1073*

▶ = Standard equipment

* At the blank, please insert suitable information for torch length or wire diameter, e.g. 3 for 3 m or 08 for 0.8 mm.

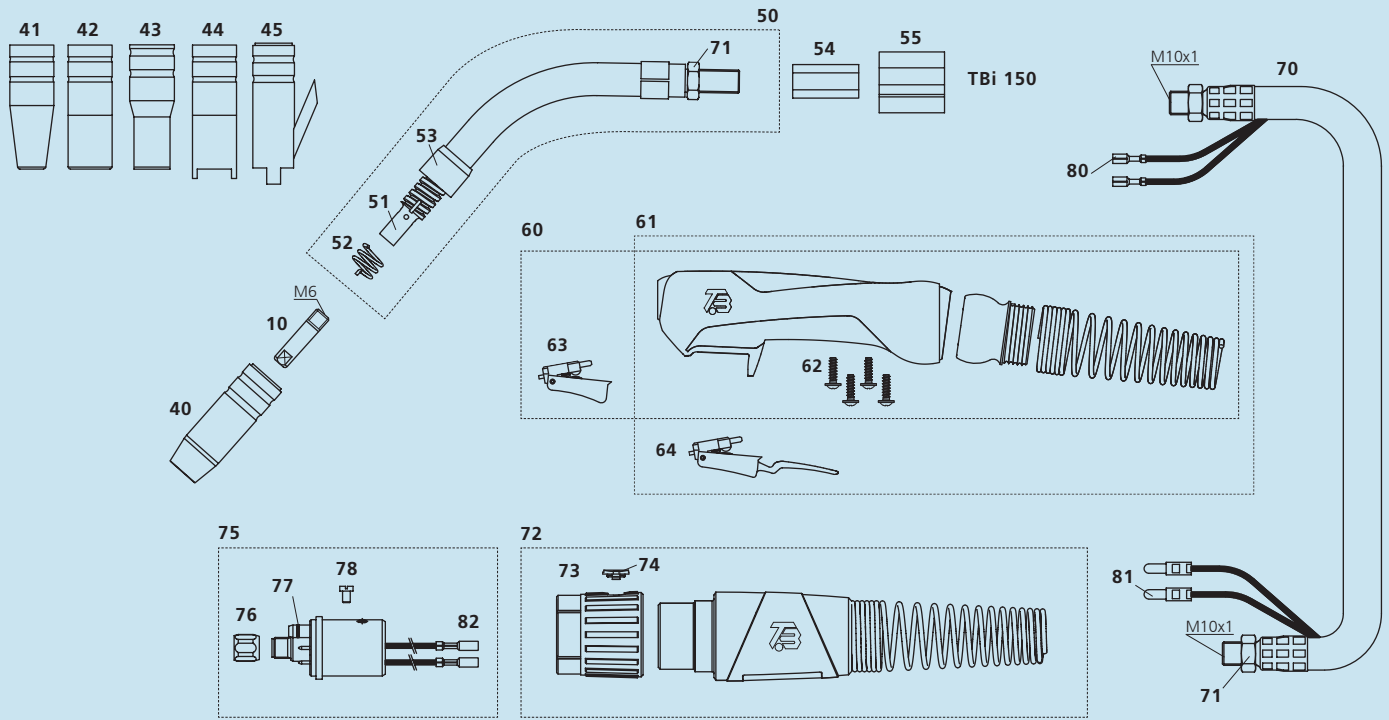
Ordering information for torches

Supplied equipped for steel wire Ø 0.8 mm
Liner, blue (Ø 0.8 - 1.0 mm).

▶ TBi 150 Expert Adapter nut ,basic'	3 m	102P321030
	4 m	102P321040
	5 m	102P321050
TBi 150 Expert Adapter nut ,brass'	3 m	102P721030
	4 m	102P721040
	5 m	102P721050
TBi 150 Expert Long trigger (Adapter nut ,basic')	3 m	102P3L1030
	4 m	102P3L1040
	5 m	102P3L1050
TBi 150 Expert Long trigger (Adapter nut ,brass')	3 m	102P7L1030
	4 m	102P7L1040
	5 m	102P7L1050

Spare parts

Pos.	Description	Part no.
50	Torch neck TBi 150, 50°	102P001002
51	Nozzle holder TBi 150 without spring	102P002037
52	Nozzle spring TBi 140/145/150	102P002011
53	Head insulator TBi 140/145/150	102P002003
54	Hex brass body M10x1 (SW12)	600P002126
55	PVC body	600P002017
60	Handle Expert cpl., gas cooled	380P230001
61	Handle Expert cpl., gas cooled, long trigger	380P230002
62	Screw for Expert handle	100P541101
63	Trigger, red, 2 poles	385P021016
64	Trigger, red, 2 poles, long	385P021018



Gas nozzle

Pos.	Description	Part no.
40	conical, NW 12 mm L= 54 mm	345P012002
40	conical, NW 12 mm long insulation L= 53 mm	345P012402
41	conical, NW 9.5 mm L= 53 mm	345P013002
42	cylindrical, NW 16 mm long insulation L= 53 mm	345P011402

Pos.	Description	Part no.
43	bottle form, NW 12.5 mm L= 53 mm	345P014002
44	spot welding nozzle, NW 16 mm, long insulation L= 60 mm	345P015402
45	nozzle for nails, NW 16 mm L= 60 mm	345P015502

Pos.	Description	Part no.
70	Coaxial cable TBi ProFlex S	361POS11_0*
71	Hex nut M10x1	101P002005
72	Cable support Expert cpl., gas cooled, 'Basic'	700P001061
73	Adaptor nut Expert (basic version)	700P002161
—	Adaptor nut Expert (brass)	700P001010
74	Cap for adaptor nut Expert	700P002059
75	Central adaptor ESG cpl., 2 poles, moveable pins	701P001048
76	Sleeve nut M10x1	701P002005
77	O-ring 4.0x1.0 mm (gas nipple)	365P100040
78	Screw M4x6	100P008401

Pos.	Description	Part no.
80	Cable lug, flat	375P000023
81	Insulated connector, male, round	375P000004
82	Insulated connector, female, round	375P000003

Ready for Tomorrow.



Welding Company België
Brandekensweg 6 | 2627 Schelle
Tel.: +32 3 880 81 80
info@weldingcompany.be

Welding Company Nederland
Ambachtsweg 2 | 4128 LC Lexmond
Tel.: +31 3 347 745008
info@weldingcompany.nl